

6 May, 2026

Dear Resident/s,

## CENTRAL CORRIDOR IS OPEN!!!!

Final gardening works will continue today and tomorrow, however you can walk through to the Community Centre now.

Please walk carefully over the next couple of weeks, as the aggregate is freshly sealed and could be a little more slippery when wet, before it settles to its final surface result.

The gardeners are continuing to mulch garden beds, and fill kerb-side soil levels for final grass installation - some sections will be sealed off for today and tomorrow.



# COMMUNITY CENTRE FURNITURE UPDATE

balance of furniture to arrive.....

**We still have an amount of furniture yet to arrive, the delivery estimates are as follows:**

**GROUND FLOOR - 13 Swivel Lounge Chairs** are forecast to arrive on  
May 21st

**LIBRARY - Chair leg restraining** due tomorrow

**LEVEL 1 - Nested Coffee Tables** due tomorrow

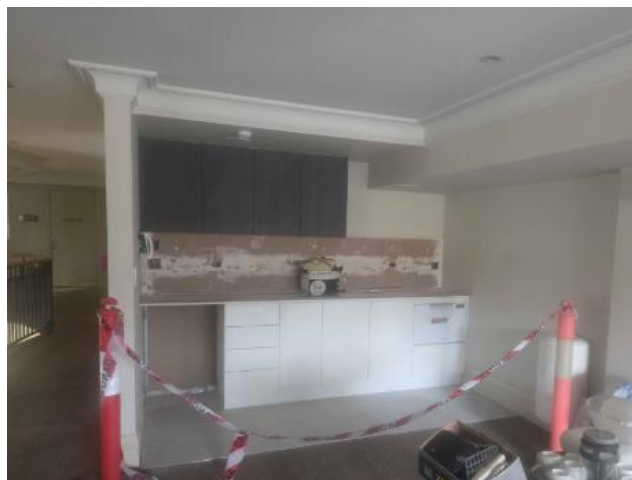
**LEVEL 1 - 16 Chairs** to match the new tables are forecast to arrive on  
May 15th.

## **LEVEL 1 KITCHENETTE UPGRADE / CLOSURE**

**The Level 1 kitchenette refurbishment is progressing smoothly and due for completion on Tuesday 12th May.**

**Shaping up rather nicely, it will serve to complement the new furniture perfectly.**

**We thank you all for your patience whilst we have been undertaking these works, particularly the social groups that have had to relocate to elsewhere during it's construction.**



## NEW GARAGE DOOR PANELS

The new garage door panels to the Community Centre have just been finished..... looking not only much improved, but quite flashy!



## MOTORISED SCOOTER NEAR MISS INCIDENTS

In the last fortnight, **two separate near miss incidents have been reported** involving residents driving a car and a motorised scooter.

The first was a night time incident involving a motorised scooter with no activated safety lighting, The vehicle driver reported only being able to see the scooter in the last moments when close by. The driver certainly got a fright and has asked us to highlight the need to have some sort of safety lighting on scooters when driving at night.

The second incident last week involved a car reversing from a carparking space at the Community Centre, in the daytime. Another resident drove behind the car on their scooter without any high visibility safety flag. Again, the driver got a terrible fright. The incident has been brought to our attention with a request for residents to please attach flags to their motorised scooters, particularly when using roads. Without suitable eye level visibility, particularly in reversing scenarios, this presents an unsafe scenario.



## **MOTORISED SCOOTER Safety recommendations from RACV**

Motorised mobility scooter safety requires treating the device as a pedestrian vehicle, prioritizing footpath use, maintaining low speeds (max (10km/h), and ensuring high visibility to others. Key safety practices include using bright clothing, fitting a high-visibility flag, avoiding road travel unless necessary, and practicing safe braking.

### **Safety Tips and Best Practices**

**Visibility:** Use a bright, reflective flag at head height and wear bright clothing to be seen, especially at intersections or parking lots.

**Footpath Priority:** Always use footpaths, footways, and shared paths whenever available. **Only use the road if the footpath is unusable or unavailable.**

**Safe Speeds:** **Keep to a safe speed**, especially in crowded areas, acting with the same care as pedestrians.

**Crossing Roads:** Choose direct routes when crossing roads **and look out for cars reversing out of driveways.**

**Operator Capability:** Ensure you can handle the controls, keep your balance, and possess good eyesight and hearing.

**Alcohol Limits:** Do not operate a mobility scooter with a blood alcohol concentration of (0.05) or higher.

Kind Regards,

Applewood Management & Staff